



Quick Setup Guide

FHD Security Camera



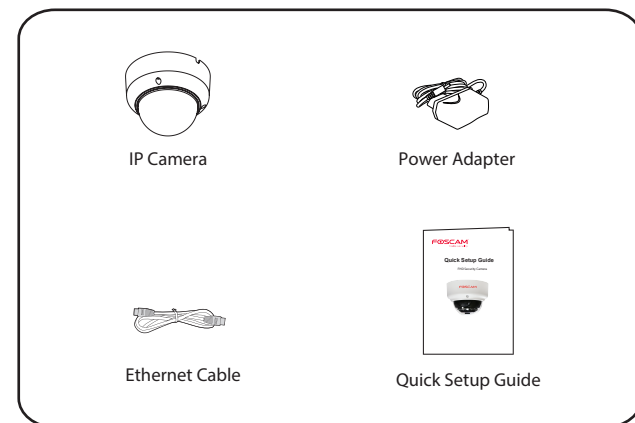
To view this guide in other languages (e.g. Nederlands, Deutsch, Français, Español), and for detailed manuals, tools, etc., please visit [foscam.com/downloads](https://www.foscam.com/downloads).

V1.0.7

Setting Up Your Foscam Security Camera

A Getting Started

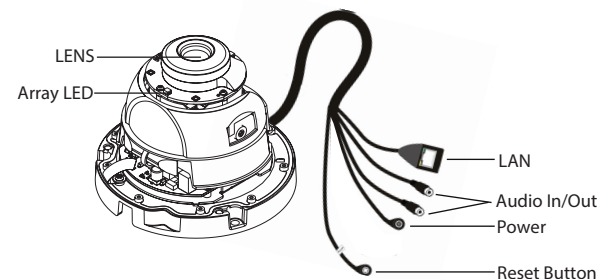
Package Contents



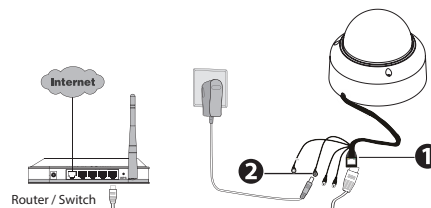
Security Tips

- Please change the password of your camera regularly, using a combination of numbers, letters and special characters.
- We recommend that you regularly update your camera to the latest available software and firmware versions to help ensure the best experience for your camera.

B Physical Description



C Setting Up Your Camera: Wired Connection via Foscam App



Note: A power adapter is unnecessary if the router / switch supports PoE (Power over Ethernet) functionality, otherwise, please connect the power adapter to the camera.

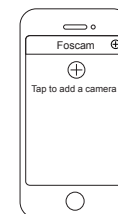
Minimum Requirements:

To help ensure a smoother video experience on the smartphone, it's recommended that your smartphone has the following:

- iOS: version 8.1 or higher.
- Android: 4.1 or higher, using a device with a Graphics Processing Unit (GPU) function.

Camera Setup Steps:

1. Connect the camera to your Internet router using an Ethernet cable.
2. Connect the power adapter to the camera, and wait for a few moments until the camera alerts you that the "Wired connection succeeded" (if the device is connected with the audio output device).
3. From your smartphone, search for "Foscam" via the App Store or Google Play Store. Download, install and open the App to begin configuration.
4. Under "Foscam" select "Tap to add a camera" and then select "Camera", after that scan the QR code, which is located at the bottom of your camera (see illustrations below).

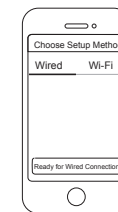


Tap + button

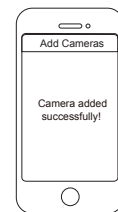


Scan the QR code which is located on your camera.

5. On the "Choose Setup Method" screen, confirm that "Wired" is selected (upper-left corner) and tap "Ready for Wired Connection." Wait a few moments for a message confirming that the setup process has been completed (see illustrations below).



Confirm "Wired" and then tap "Ready for Wired Connection"



Camera added successfully!

D Other Ways to Access Your Camera

Foscam Cloud Service



You can access the camera via the Foscam Cloud website:

<https://www.myfoscam.com>

Some of the benefits of viewing your camera in the cloud:

- It's simple and convenient to remotely access and manage all your WiFi security cameras.
- Enjoy the latest features first through Foscam Cloud including cloud storage, video sharing, and more.
- Getting started is fast—if you have already registered an account through Foscam App, you can directly use your login credentials for Foscam Cloud.

Web User Interface



(e.g. Internet Explorer/Edge/Chrome/Firefox/Safari)

If you would like to manage your camera more professionally, we suggest you access your camera via browser. You can download the "Equipment Search Tool" from [foscam.com/tools](https://www.foscam.com/tools) to your computer, then access the camera directly.

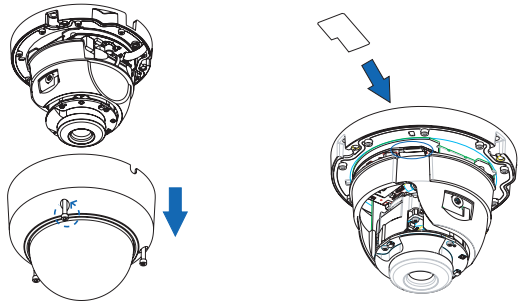
Foscam VMS



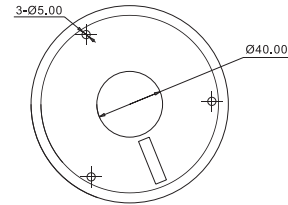
If you would like to manage multiple cameras, we suggest you install the Foscam VMS. You can download the "Foscam VMS" from [foscam.com/vms](https://www.foscam.com/vms).

E Hardware Installation

1. Loosen the three screws on the cover of the device, and remove the cover.
2. Insert a micro SD into the SD card slot (for local storage).



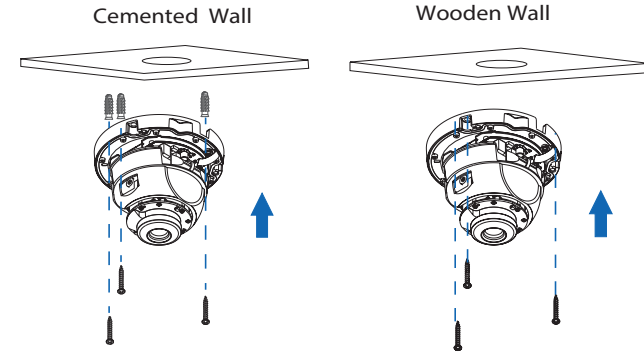
3. Install the mounting paper according to the monitored area.



Note:

Please drill the middle hole of the mounting paper if you want to wire through the top.

4. Install the base of the device on the desired surface using the included expansion screws.

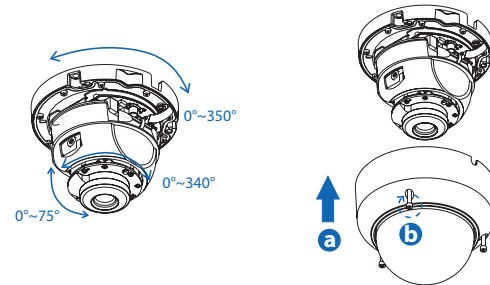


5. Wiring

- a. Wire out from the gap of the base, or wire through a drilled hole.
- b. Connect the camera to your LAN (Local Area Network or Internet router) via Ethernet cable.
- c. Power on the device.

6. Turn the angle of the lens.

7. Finally, fix the cover and the base with screws.



Note:

Do not block the Array LED when rotating, so as not to affect the night vision.

F Important Notice

■ Camera Username & Password

The camera username & password are used to access and manage your camera. Having a strong password can improve the security of your camera significantly.

If you have forgotten either of them, please press the "Reset" button and hold it for more than 15 seconds while the camera is powered on. After hearing the voice prompt (if the device is connected with the audio output device), release the button. The camera will automatically reboot and the default settings will be restored. The default username / password will then become admin / (blank), respectively.

After restoring to the factory default settings, please delete the camera from Foscam App, and then add it again.

■ Foscam Cloud Service Account Username & Password

Your Foscam Cloud service account and password may be used to access both Foscam App and the Foscam Cloud service website. Therefore, you may register the account username & password on either one.

■ Storage Media

our camera supports cloud, NVR (Network Video Recorder), and Micro SD card (only supports FAT-32 format) storage formats. If you wish to record and playback large amounts of video, we recommend using a Foscam NVR device as well.

■ Firmware Upgrade

You can upgrade the firmware of your camera with Foscam App by using the new "One-key Online Upgrade" feature (Open Foscam APP, select **Settings > Firmware Upgrade**).

You also can download the latest version to upgrade your camera from our official website foscam.com/updates.

■ Safety Tips

- Please ensure that the proper power supply is used before using the camera.
- Please install the camera securely using the screws provided.
- To avoid the risk of fire or electric shock, please keep the camera connectors in a cool, dry place.
- Change your default port to a greater range to help ensure the safety of your connection.
- Check the logs of your Foscam cameras frequently. Foscam cameras have embedded logs reminding you which IP addresses are accessing the camera.
- The cords on this product presents a potential strangulation hazard. For child safety, please keep these cords and the camera out of the reach of children.



FOSCAM
home security



CE Certificate Website:

<http://www.foscam.com/company/ce-certificate.html>

Exporter and Importer Information Opened to Public:

<http://www.foscam.com/company/open-information.html>

www.foscam.com

Questions? For any issues that occur during the setup process, please write to support@foscam.com —we're here to help!

As a result of product upgrades and other reasons, this guide may not be able to update in time, resulting in inconsistency with the official website information, please take the official website (www.foscam.com) information as the standard.